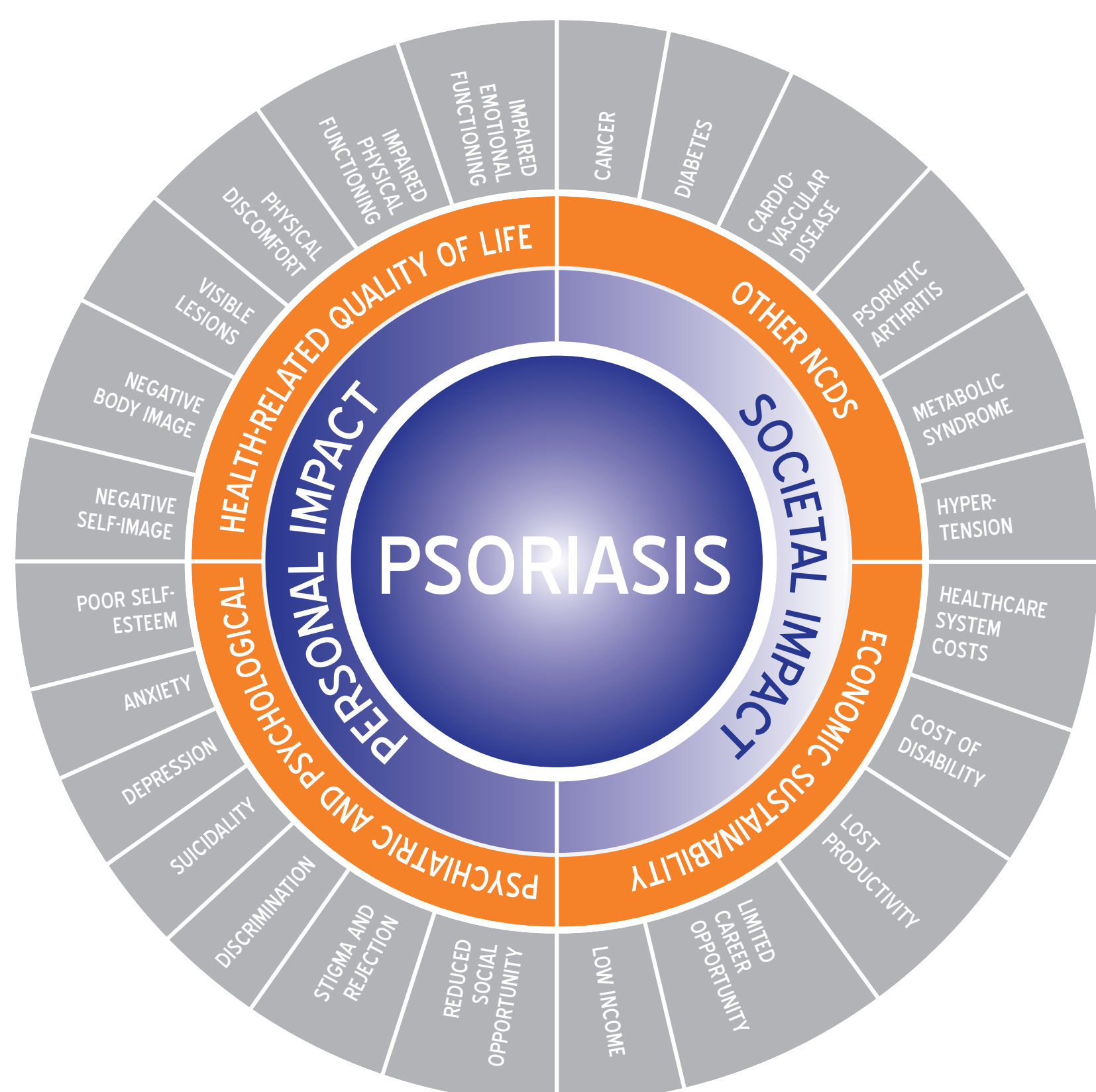
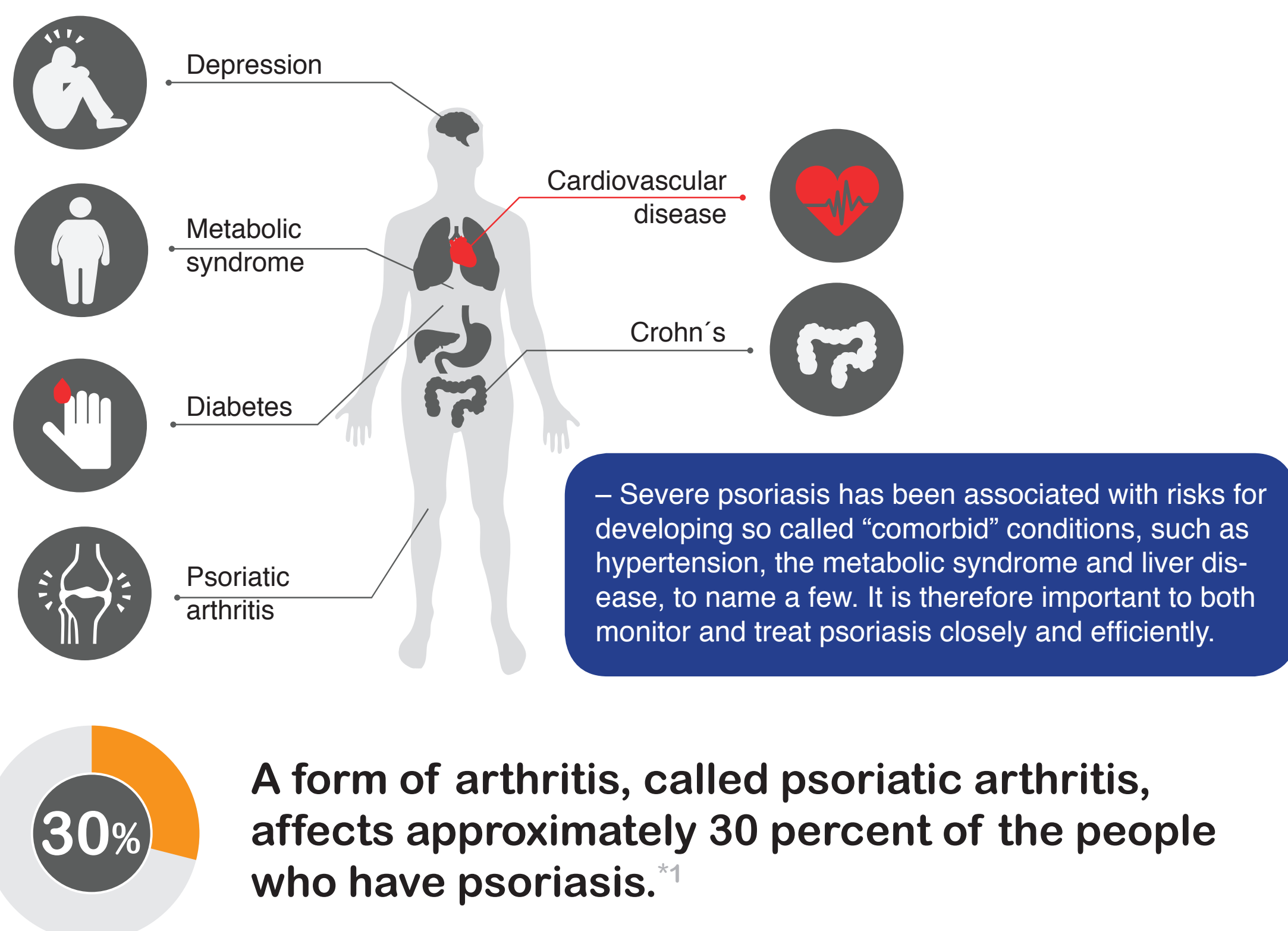


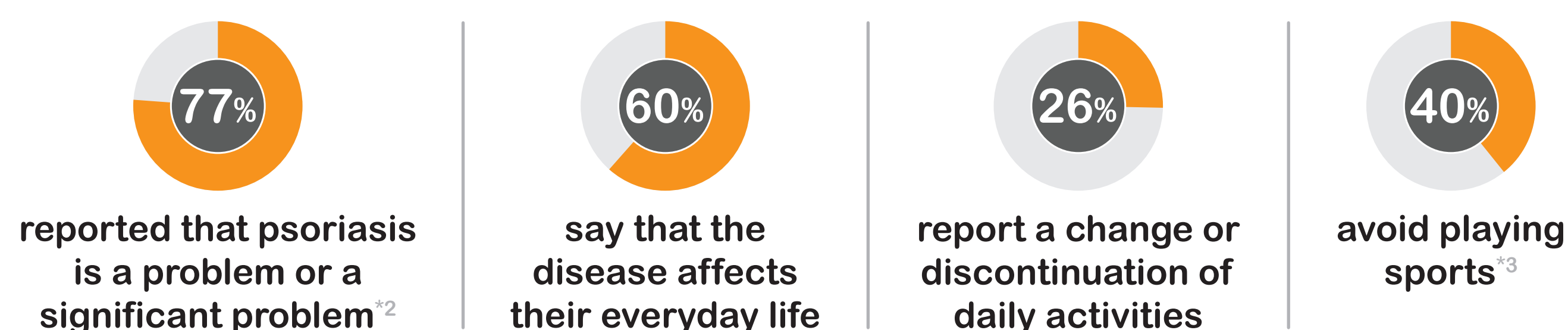
Psoriasis affects more than 125 000 000 of the world's population



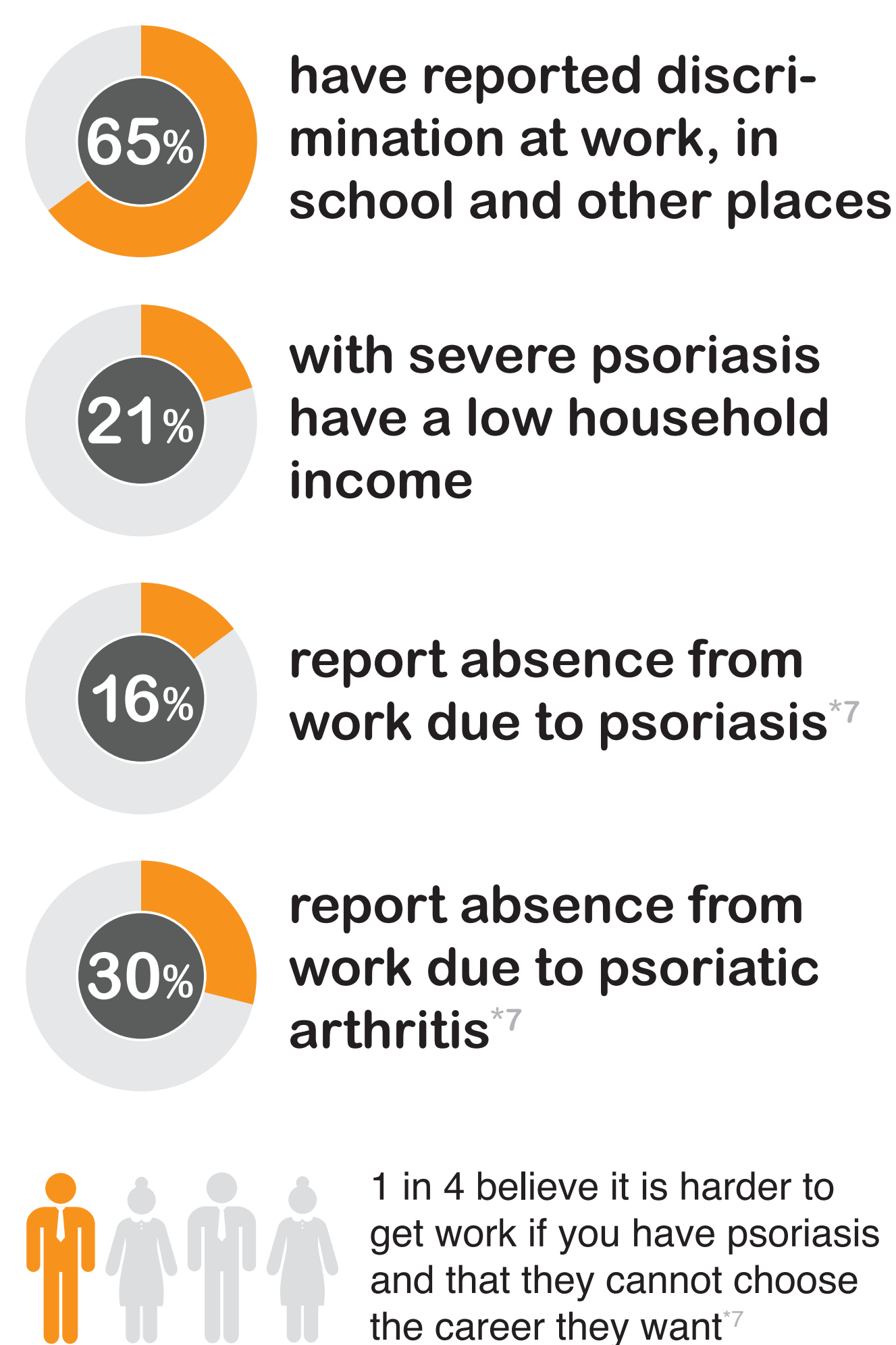
Psoriasis affects the whole person



The daily impact of psoriasis



Socioeconomic effects of psoriasis

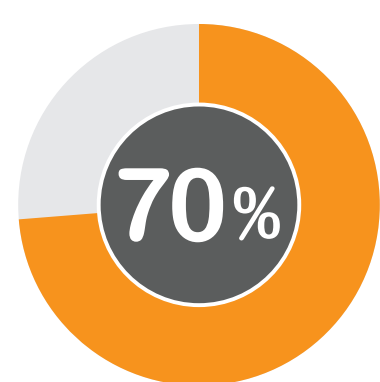


The psychosocial burden of psoriasis

The prevalence of depression in psoriasis is estimated to be up to*4



Available treatment options, low to moderate satisfaction, with over*2



have experienced stigmatization*5

The prevalence of suicidal ideation has been reported to be between **2,5-9,7%** among people with psoriasis.*6

REFERENCES

- *1 Psoriasis beyond the skin: an expert group consensus on the management of psoriatic arthritis and common co-morbidities in patients with moderate-to-severe psoriasis. R. Strohal, I. B. Kirby, L. Puig3 on behalf of the Psoriasis Expert Panel (G. Girolomoni, K. Kragballe, T. Luger, F.O. Nestle, J.C. Prinz, M. Stahle, N. Yawalkar
- *2 L. Dubertret, L.; U. Mrowietz; A. Ranki; P.C.M. van de Kerkhof; S. Chimenti; T. Lotti; G. Schäfer “European Patient Perspectives on the Impact of Psoriasis: the EUROPSO Patient Membership Survey”. The British Journal of Dermatology, Vol. 155 Issue 4, Pages 729-736, <http://www3.interscience.wiley.com/journal/118568777/abstract>. August. 4, 2008
- *3 “Image Matters.” Psoriasis. Media Planet, October 2007, pg. 5.
- *4 Weiss SC, Kimball AB, Liewehr DJ, et al. Quantifying the harmful effect of psoriasis on health-related quality of life. J Am Acad Dermatol. 2002;47:512-8
- *5 IFPA member survey 2011
- *6 Basavaraj KH, Navya MA, Rashmi R. Stress and quality of life in psoriasis: an update. International Journal of Dermatology (2011) 50, 783-792.
- *7 Gupta MA, Gupta AK. Depression and suicidal ideation in dermatology patients with acne, alopecia areata, atopic dermatitis and psoriasis. Br J Dermatol 1998; 139: 846-850.
- *7 Swedish Psoriasis Association member survey 2006



<http://www.ifpa-pso.org>



INTERNATIONAL FEDERATION
OF PSORIASIS ASSOCIATIONS